

Page 1

Changed chart(s) since Disc 02-2015

ADD = Added chart, REV = Revised chart, DEL = Deleted chart.

ACT	PROCEDURE IDENT	INDEX	REV DATE	EFF DATE
-----	-----------------	-------	----------	----------

No revision activity since Disc 02-2015

# **TERMINAL CHART NOTAMS**

## **Chart NOTAMs for Airport LUBM**

**Type:** Terminal

**Effectivity:** Temporary

**Begin Date:** Immediately

**End Date:** Until Further Notice

(10-3) MEA 4000 applicable on tracks/bearings to SID termination points.

**General Info**

Marculesti, MDA

N 47° 51.8' E 28° 12.8' Mag Var: 4.6°E

Elevation: 331'

Public, IFR, Customs, Landing Fee

Time Zone Info: GMT+2:00 uses DST

**Runway Info**

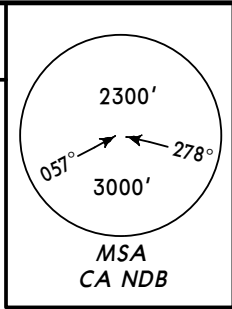
**Communications Info**

**Notebook Info**

**LUBM**  
**MARCULESTI INTL**

**JEPPESEN MARCULESTI, MOLDOVA**  
15 AUG 14 **10-2** **Eff 21 Aug** **RNAV STAR**

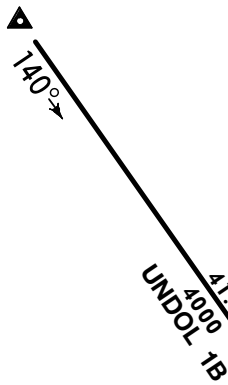
Apt Elev  
**331'**  
Alt Set: hPa Trans level: By ATC Trans alt: 4000'



**ERADA ONE BRAVO (ERADA 1B) [ERAD1B]**  
**INROG ONE BRAVO (INROG 1B) [INRO1B]**  
**LAVDA ONE BRAVO (LAVDA 1B) [LAVD1B]**  
**UNDOL ONE BRAVO (UNDOL 1B) [UNDO1B]**  
**UNIRA ONE BRAVO (UNIRA 1B) [UNIR1B]**

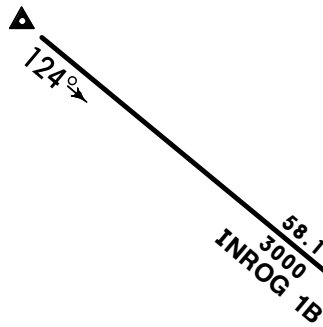
**RWY 07 RNAV ARRIVALS**  
RNAV (GNSS)

**UNDOL**  
N48 27.1 E027 43.3



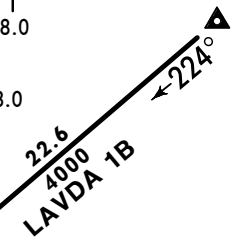
LOST COMMS ▼ LOST COMMS ▼ LOST COMMS ▼ LOST COMMS  
LOST COMMS  
MAINTAIN last cleared FL/altitude to IAF, then descend in holding to 4000' for instrument approach.  
LOST COMMS

**INROG**  
N48 24.9 E026 48.8



**\*335 CA**  
N47 53.0 E028 18.0  
(IAF)  
**BM301**  
N47 53.0 E028 18.0

**LAVDA**  
N48 07.5 E028 43.8

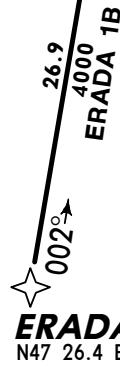


(IAF)  
**BM304**  
N47 47.6  
E027 55.3

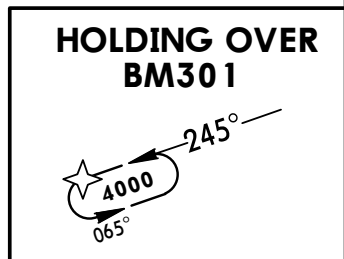
Direct distance to Marculesti Intl from:  
BL301 4 NM  
BL304 13 NM



**UNIRA**  
N47 10.1 E027 51.1



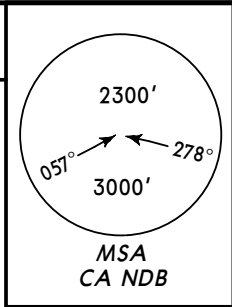
**ERADA**  
N47 26.4 E028 12.2



**LUBM**  
MARCULESTI INTL

**JEPPESEN MARCULESTI, MOLDOVA**  
15 AUG 14 **(10-2A)** **Eff 21 Aug** **RNAV STAR**

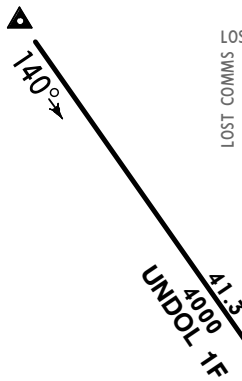
Apt Elev  
**331'**  
Alt Set: hPa Trans level: By ATC Trans alt: 4000'



ERADA ONE FOXTROT (ERADA 1F)[ERAD1F]  
INROG ONE FOXTROT (INROG 1F)[INRO1F]  
LAVDA ONE FOXTROT (LAVDA 1F)[LAVD1F]  
UNDOL ONE FOXTROT (UNDOL 1F)[UNDO1F]  
UNIRA ONE FOXTROT (UNIRA 1F)[UNIR1F]

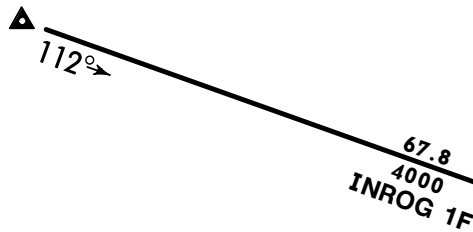
**RWY 25 RNAV ARRIVALS**  
RNAV (GNSS)

**UNDOL**  
N48 27.1 E027 43.3



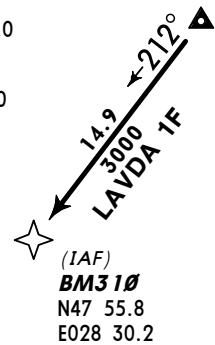
LOST COMMS ▼ LOST COMMS ▼ LOST COMMS ▼ LOST COMMS  
MAINTAIN last cleared FL/altitude to IAF, then descend in holding to 4000' for instrument approach.  
LOST COMMS

**INROG**  
N48 24.9 E026 48.8

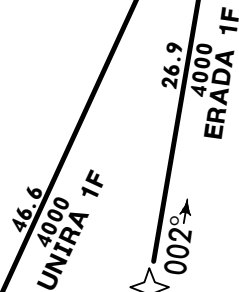


**\*335 CA**  
N47 53.0 E028 18.0  
(IAF)  
**BM301**  
N47 53.0 E028 18.0

**LAVDA**  
N48 07.5 E028 43.8

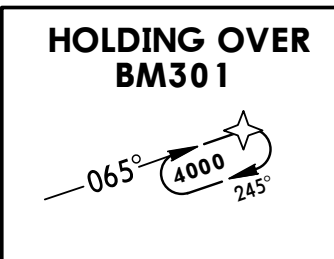


Direct distance to Marculesti Intl from:  
BL301 4 NM  
BL310 12 NM



**ERADA**  
N47 26.4 E028 12.2

**UNIRA**  
N47 10.1 E027 51.1

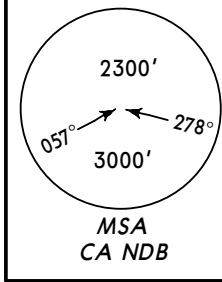


**LUBM**  
**MARCULESTI INTL**

**JEPPESEN** **MARCULESTI, MOLDOVA**  
15 AUG 14 **10-3** **Eff 21 Aug** **RNAV SID**

*MARCULESTI Tower <b>122.05</b>	Apt Elev <b>331'</b>	Trans level: By ATC Trans alt: 4000' 1. Contact MARCULESTI Tower after take-off. 2. Turns are calculated with 240 KT and bank angle 20°.
------------------------------------	-------------------------	--

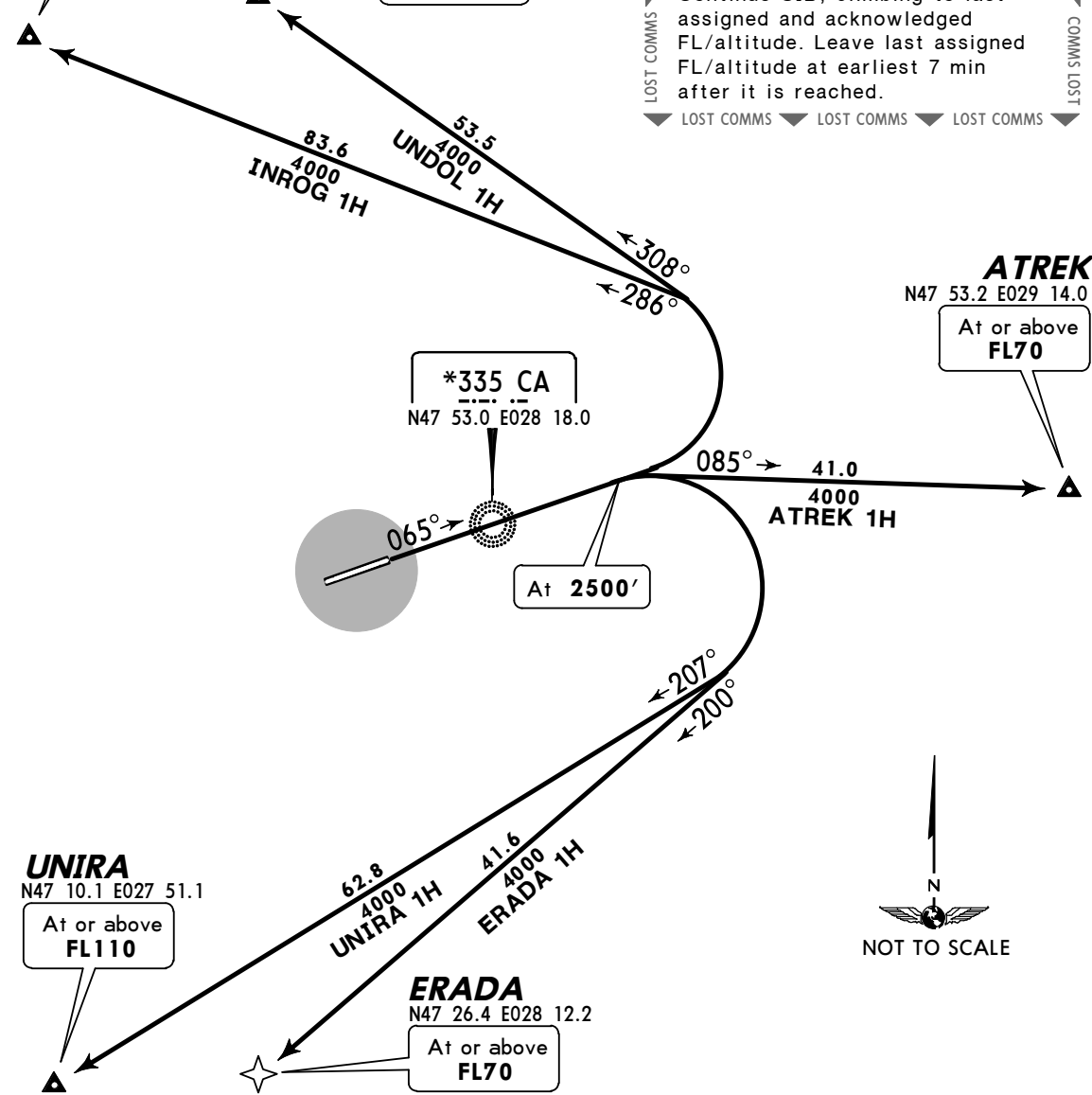
**ATREK ONE HOTEL (ATREK 1H) [ATRE1H]**  
**ERADA ONE HOTEL (ERADA 1H) [ERAD1H]**  
**INROG ONE HOTEL (INROG 1H) [INRO1H]**  
**UNDOL ONE HOTEL (UNDOL 1H) [UNDO1H]**  
**UNIRA TWO HOTEL (UNIRA 1H) [UNIR1H]**  
**RWY 07 RNAV DEPARTURES**  
**RNAV (GNSS)**



**INROG**  
N48 24.9 E026 48.8  
At or above  
**FL180**

**UNDOL**  
N48 27.1 E027 43.3  
At or above  
**FL280**

LOST COMMS ▼ LOST COMMS ▼ LOST COMMS ▼ LOST COMMS ▼  
 Continue SID, climbing to last assigned and acknowledged FL/altitude. Leave last assigned FL/altitude at earliest 7 min after it is reached.  
 ▼ LOST COMMS ▼ LOST COMMS ▼ LOST COMMS ▼



Initial climb clearance **4000'**

SID	ROUTING
<b>ATREK 1H</b>	Climb straight ahead to 2500', turn RIGHT, 085° track to ATREK.
<b>ERADA 1H</b>	Climb straight ahead to 2500', turn RIGHT, 200° track to ERADA.
<b>INROG 1H</b>	Climb straight ahead to 2500', turn LEFT, 286° track to INROG.
<b>UNDOL 1H</b>	Climb straight ahead to 2500', turn LEFT, 308° track to UNDOL.
<b>UNIRA 1H</b>	Climb straight ahead to 2500', turn RIGHT, 207° track to UNIRA.

**LUBM**  
**MARCULESTI INTL**

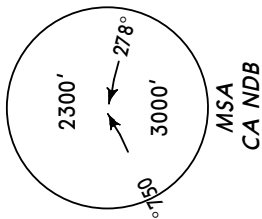
**JEPPesen** **MARCULESTI, MOLDOVA**  
15 AUG 14 **(10-3A)** **Eff 21 Aug** **RNAV SID**

\*MARCULESTI Tower  
**122.05**

*Apt Elev*  
**331'**

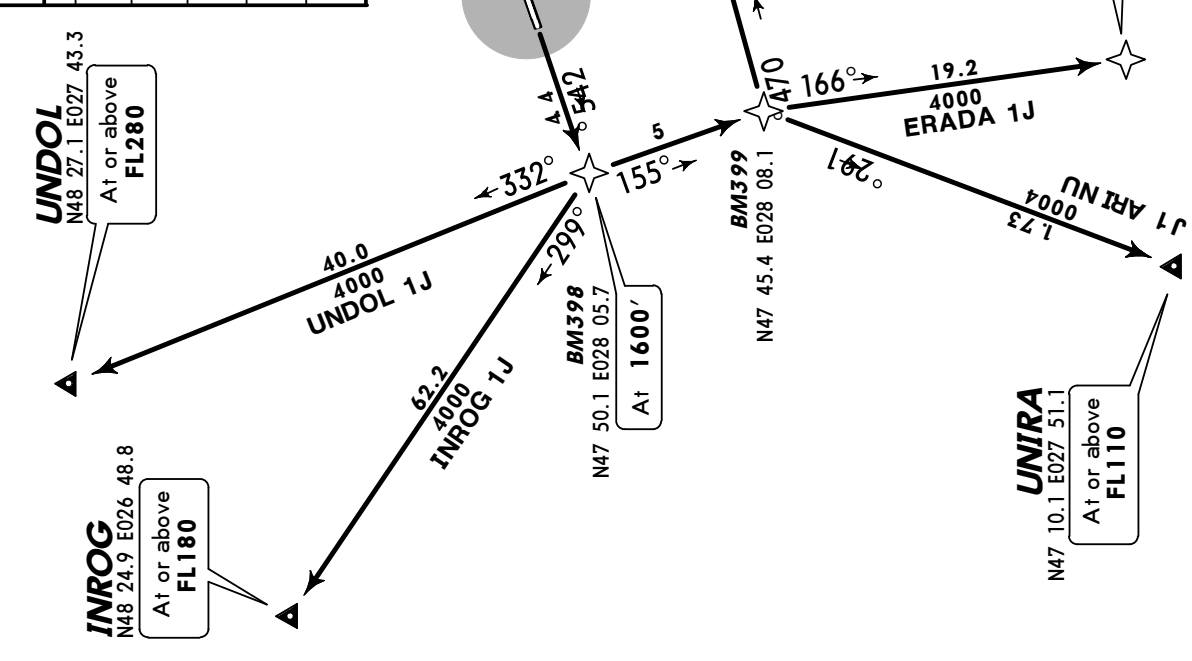
Trans level: By ATC Trans alt: 4000'

1. Contact MARCULESTI Tower after take-off.
2. Turns are calculated with 240 KT and bank angle 20°.



**ATREK ONE JULIETT (ATREK 1J) [ATRE1J]**  
**ERADA ONE JULIETT (ERADA 1J) [ERAD1J]**  
**INROG ONE JULIETT (INROG 1J) [INRO1J]**  
**UNDOL ONE JULIETT (UNDOL 1J) [UNDO1J]**  
**UNIRA TWO JULIETT (UNIRA 1J) [UNIR1J]**  
**RWY 25 RNAV DEPARTURES**  
**RNAV (GNSS)**

Initial climb clearance <b>4000'</b>	
SID	ROUTING
<b>ATREK 1J</b>	Climb straight ahead to 1600' (BM398), turn LEFT, 155° track to BM399, turn LEFT, 074° track to ATREK.
<b>ERADA 1J</b>	Climb straight ahead to 1600' (BM398), turn LEFT, 155° track to BM399, turn RIGHT, 166° track to ERADA.
<b>INROG 1J</b>	Climb straight ahead to 1600' (BM398), turn RIGHT, 299° track to INROG.
<b>UNDOL 1J</b>	Climb straight ahead to 1600' (BM398), turn RIGHT, 332° track to UNROL.
<b>UNIRA 1J</b>	Climb straight ahead to 1600' (BM398), turn LEFT, 155° track to BM399, turn RIGHT, 192° track to UNIRA.



LOST COMMS ▼ LOST COMMS ▼ LOST COMMS ▼ LOST  
 Continue SID, climbing to last assigned and acknowledged FL/altitude. Leave last assigned FL/altitude at earliest 7 min after it is reached.  
 LOST COMMS ▼ LOST COMMS ▼ LOST COMMS ▼ LOST  
 LOST COMMS ▼ LOST COMMS ▼ LOST COMMS ▼ LOST

**LUBM**

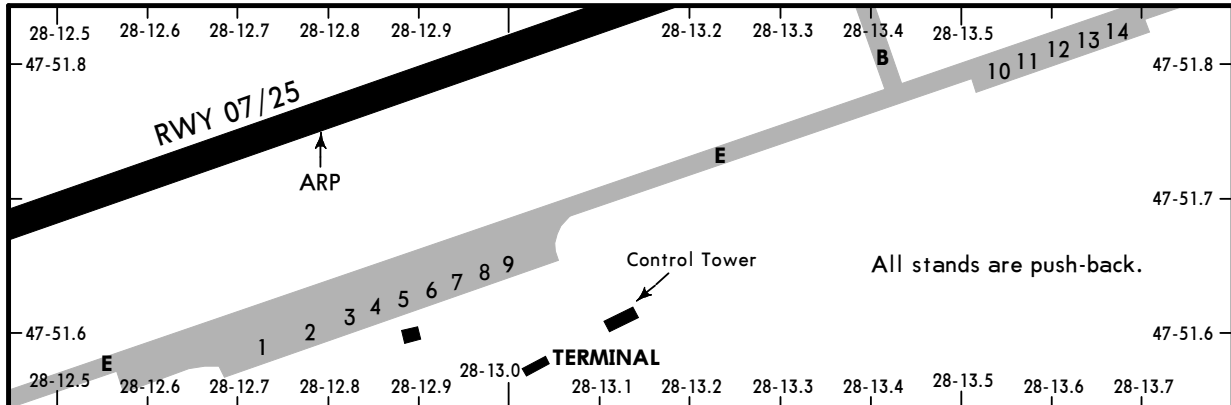
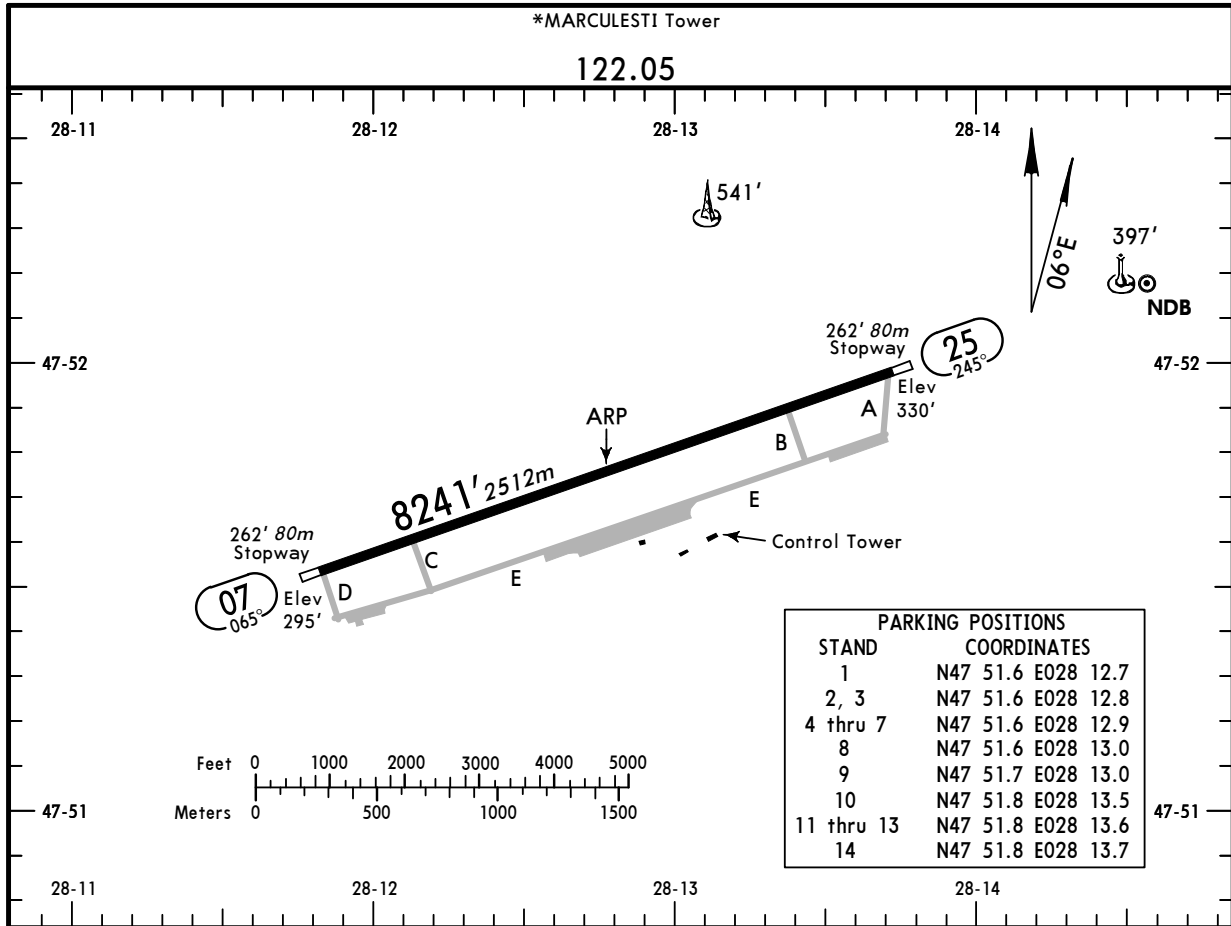
Apt Elev **331'**  
 N47 51.8 E028 12.8

**JEPPESEN**

**MARCULESTI, MOLDOVA**

15 AUG 14 **(10-9)** Eff 21 Aug

**MARCULESTI INTL**



**ADDITIONAL RUNWAY INFORMATION**

RWY	USABLE LENGTHS			WIDTH
	Threshold	Glide Slope	TAKE-OFF	
07				131'
25				40m

**JAR-OPS**

TAKE-OFF <b>I</b>		
All Rwys		
LVP must be in force	All Rwys	
RCLM (DAY only) or RL	RCLM (DAY only) or RL	NIL (DAY only)
A		
B	250m	500m
C		
D	300m	

**I** Operators applying U.S. Ops Specs: CL required below 300m.



**LUBM**



**Standard**

15 AUG 14 **10-9S**  
Eff 21 Aug

**MARCULESTI, MOLDOVA**  
MARCULESTI INTL

STRAIGHT-IN RWY	A	B	C	D
<b>07</b> RNAV ①	<b>910'</b> (615') <b>R1500m</b>	<b>910'</b> (615') <b>R1500m</b>	<b>910'</b> (615') <b>C2400m</b>	<b>910'</b> (615') <b>C2400m</b>
<b>25</b> RNAV ①	<b>690'</b> (360') <b>R1500m</b>	<b>690'</b> (360') <b>R1500m</b>	<b>690'</b> (360') <b>R1600m</b>	<b>690'</b> (360') <b>R1600m</b>
2 NDB ① ②	<b>760'</b> (430') <b>R1500m</b>	<b>760'</b> (430') <b>R1500m</b>	<b>760'</b> (430') <b>R2000m</b>	<b>760'</b> (430') <b>R2000m</b>
2 NDB ① ③	<b>760'</b> (430') <b>R2000m</b>	<b>760'</b> (430') <b>R2000m</b>	<b>760'</b> (430') <b>R2000m</b>	<b>760'</b> (430') <b>R2000m</b>

- ① Continuous Descent Final Approach.
- ② with FMS.
- ③ w/o FMS.

CIRCLE-TO-LAND	100 KT	135 KT	180 KT	205 KT
After apch to rwy 07 ④	<b>910'</b> (615')	<b>1090'</b> (795')	<b>1280'</b> (985')	<b>1340'</b> (1045')
After RNAV rwy 25 ⑤	<b>760'</b> (430')	<b>1110'</b> (780')	<b>1310'</b> (980')	<b>1330'</b> (1000')
After 2NDB rwy 25	<b>760'</b> (429') V1500m ⑥	<b>1110'</b> (779') V1600m ⑥	<b>1310'</b> (979') V2400m	<b>1330'</b> (999') V3600m

- ④ Circling height based on rwy 07 thresh elev of 295'.
- ⑤ Circling height based on rwy 25 thresh elev of 330'.
- ⑥ or higher minimums of preceding straight-in approach.

**TAKE-OFF RWY 07, 25**

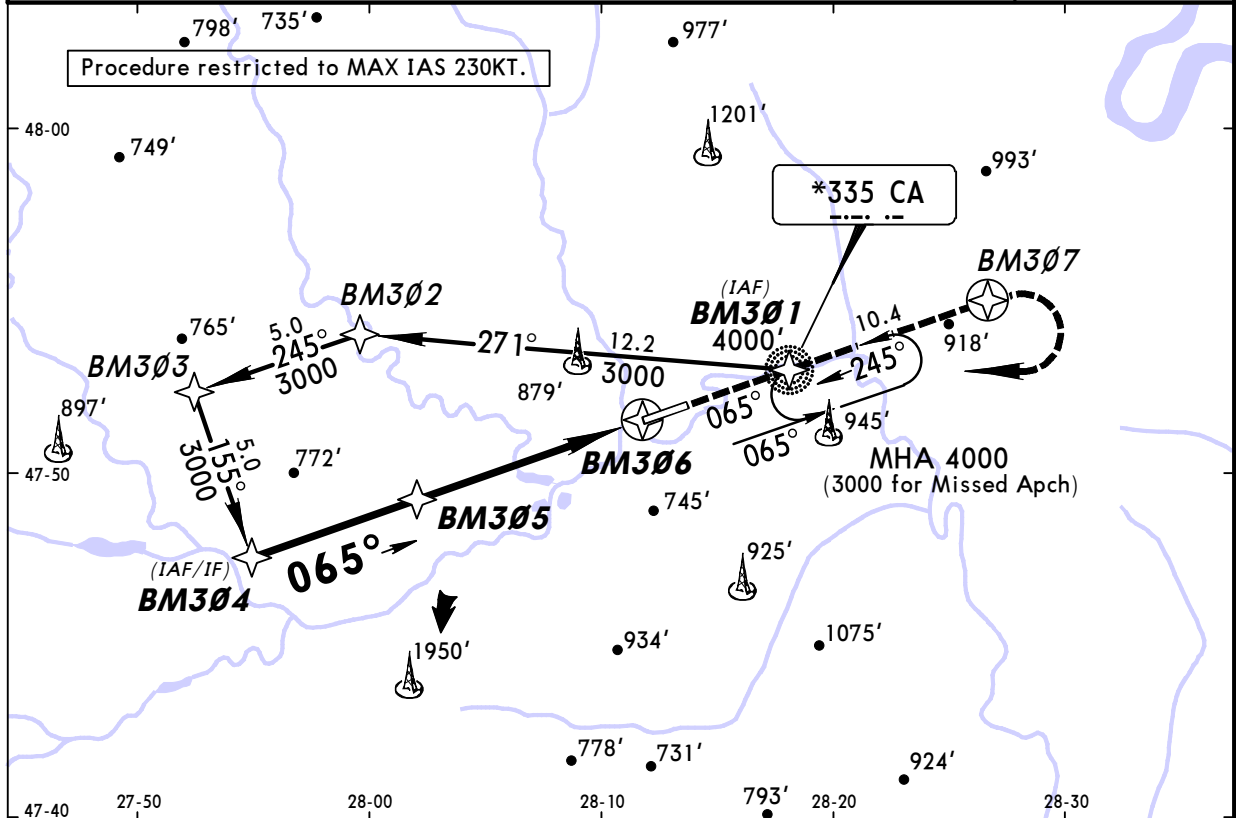
LVP must be in force		RCLM (DAY only) or RL	NIL (DAY only)
A	RCLM (DAY only) or RL		
B	250m	400m	500m
C			
D	300m		

**LUBM**  
**MARCULESTI INTL**

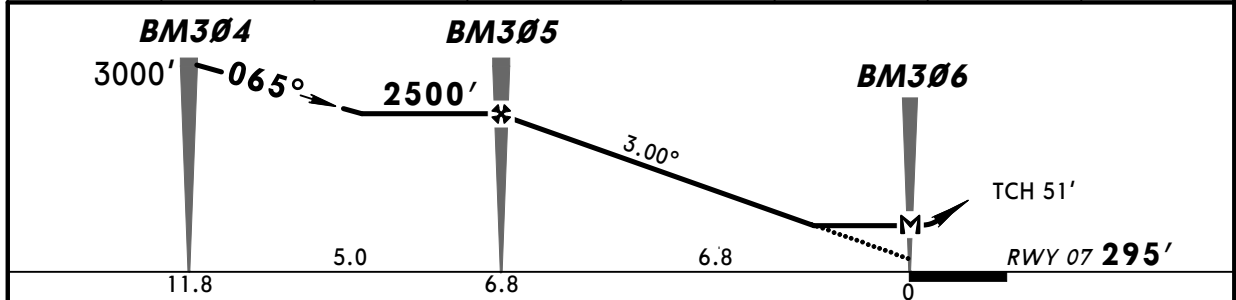
**JEPPESEN** **MARCULESTI, MOLDOVA**  
15 AUG 14 (12-1) Eff 21 Aug RNAV (GPS) Rwy 07

BRIEFING STRIP™

*MARCULESTI Tower					
122.05					
RNAV	Final Apch Crs <b>065°</b>	Minimum Alt <b>BM305</b> <b>2500'</b> (2205')	LNAV MDA(H) <b>910'</b> (615')	Apt Elev <b>331'</b> <b>RWY 295'</b>	
<b>MISSED APCH:</b> Climb STRAIGHT AHEAD to BM307 to 2300', then turn RIGHT to BM301/CA NDB climbing to 3000'. <b>MISSED APCH WITH LOST COMM:</b> Climb STRAIGHT AHEAD to BM307 to 2300', then turn RIGHT to BM301/CA NDB climbing to 3000' and complete at least one holding.					MSA CA NDB/BM301
Alt Set: hPa      Rwy Elev: 11 hPa      Trans level: By ATC      Trans alt: 4000'					



NM to BM306	7.0	6.0	5.0	4.0	3.0	2.0	1.0
ALTITUDE	2500'	2242'	1927'	1609'	1291'	976'	661'



Gnd speed-Kts	70	90	100	120	140	160	2300'	↑ BM307
Descent Angle 3.00°	372	478	531	637	743	849		
MAP at BM306								

PANS OPS

<b>JAR-OPS</b>		STRAIGHT-IN LANDING RWY 07		CIRCLE-TO-LAND	
LNAV		MDA(H) <b>910'</b> (615')		Circling height based on rwy 07 thresh elev of 295'	
A	RVR 1500m	Max Kts	MDA(H)	VIS	
B		100	<b>910'</b> (615')	1500m	
C		135	<b>1090'</b> (795')	1600m	
D	RVR 2000m	180	<b>1280'</b> (985')	2400m	
		205	<b>1340'</b> (1045')	3600m	

**LUBM**  
**MARCULESTI INTL**

**JEPPESEN** **MARCULESTI, MOLDOVA**  
15 AUG 14 (12-2) Eff 21 Aug RNAV (GPS) Rwy 25

BRIEFING STRIP

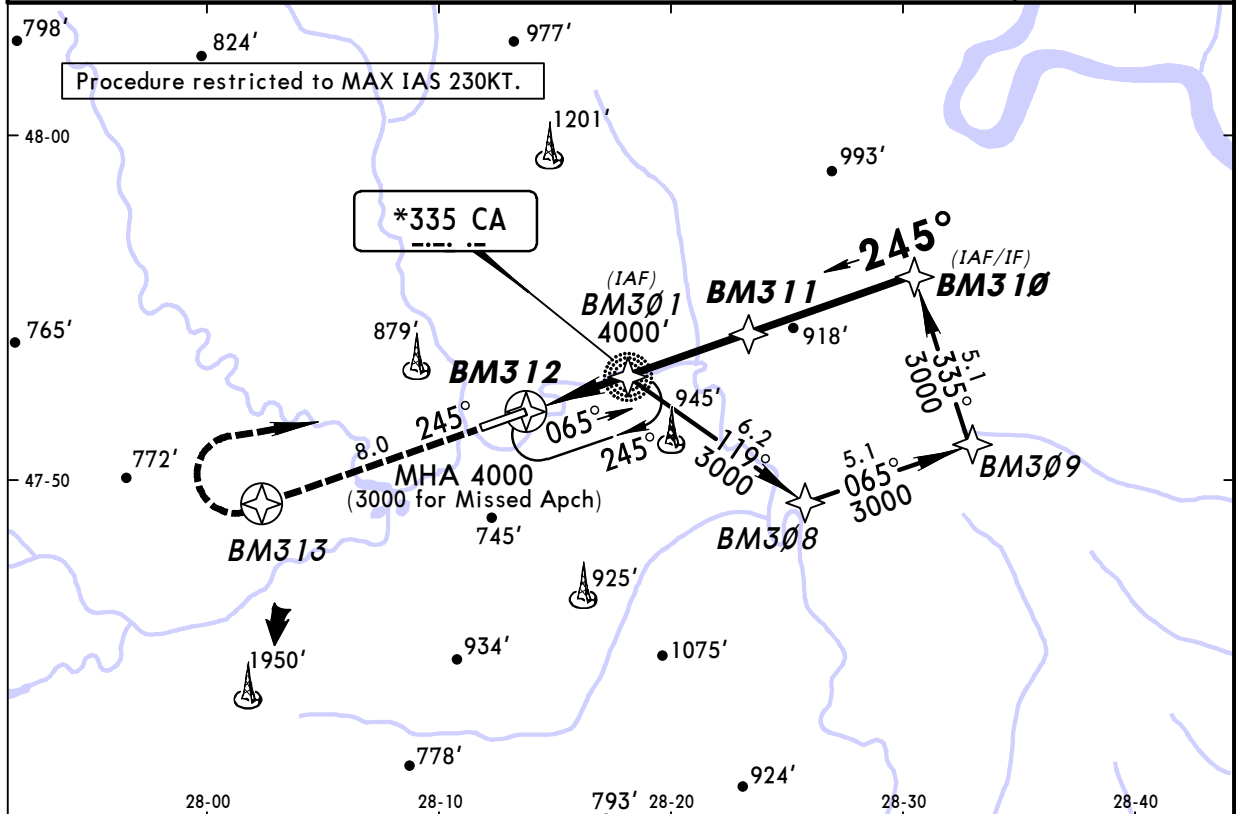
\*MARCULESTI Tower

122.05

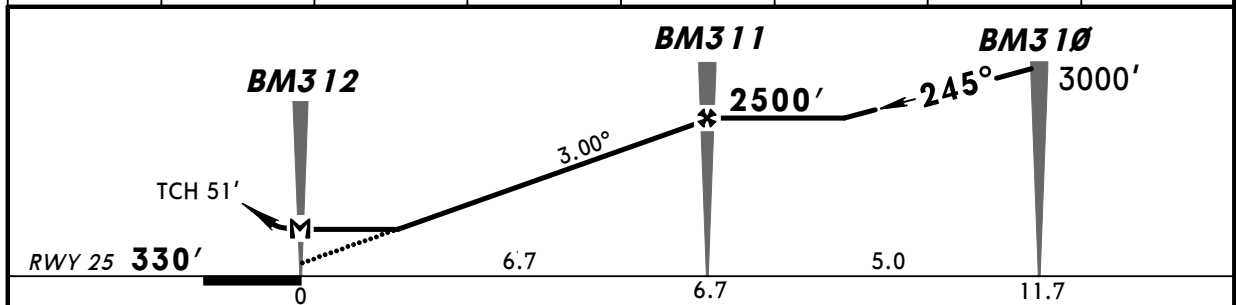
RNAV	Final Apch Crs <b>245°</b>	Minimum Alt <b>BM311</b> <b>2500'</b> (2170')	LNAV MDA(H) <b>690'</b> (360')	Apt Elev <b>331'</b> RWY <b>330'</b>	<p style="text-align: center;">MSA CA NDB/BM301</p>
------	----------------------------------	---	--------------------------------------	---	---

**MISSED APCH:** Climb STRAIGHT AHEAD to BM313 to 1600', then turn RIGHT to BM301/CA NDB climbing to 3000'.  
**MISSED APCH WITH LOST COMM:** Climb STRAIGHT AHEAD to BM313 to 1600', then turn RIGHT to BM301/CA NDB climbing to 3000' and complete at least one holding.

Alt Set: hPa      Rwy Elev: 12 hPa      Trans level: By ATC      Trans alt: 4000'



NM to BM312	1.0	2.0	3.0	4.0	5.0	6.0	7.0
ALTITUDE	696'	1011'	1326'	1644'	1962'	2277'	2500'



Gnd speed-Kts	70	90	100	120	140	160	1600'	↑ BM313
Descent Angle 3.00°	372	478	531	637	743	849		
MAP at BM312								

PANS OPS

JAR-OPS		STRAIGHT-IN LANDING RWY 25		CIRCLE-TO-LAND	
		LNAV		Circling height based on rwy 25 thresh elev of 330'	
		MDA(H) <b>690'</b> (360')		Max Kts	VIS
A		RVR 1500m		100	760' (430') 1500m
B		RVR 1800m		135	1110' (780') 1600m
C		RVR 2000m		180	1310' (980') 2400m
D		RVR 2000m		205	1330' (1000') 3600m

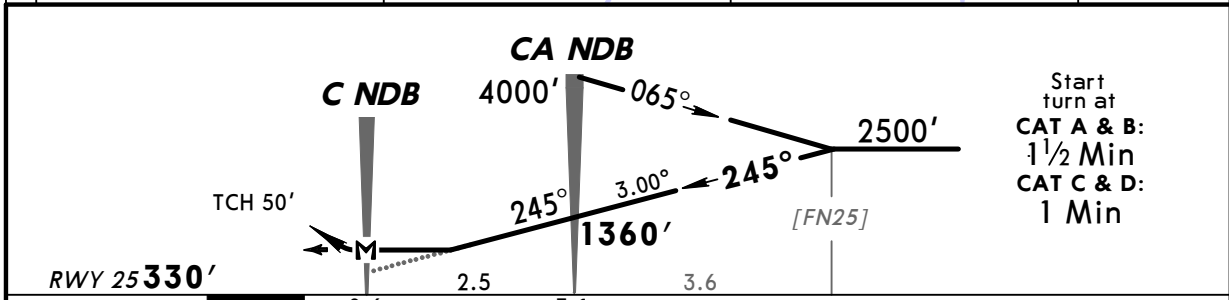
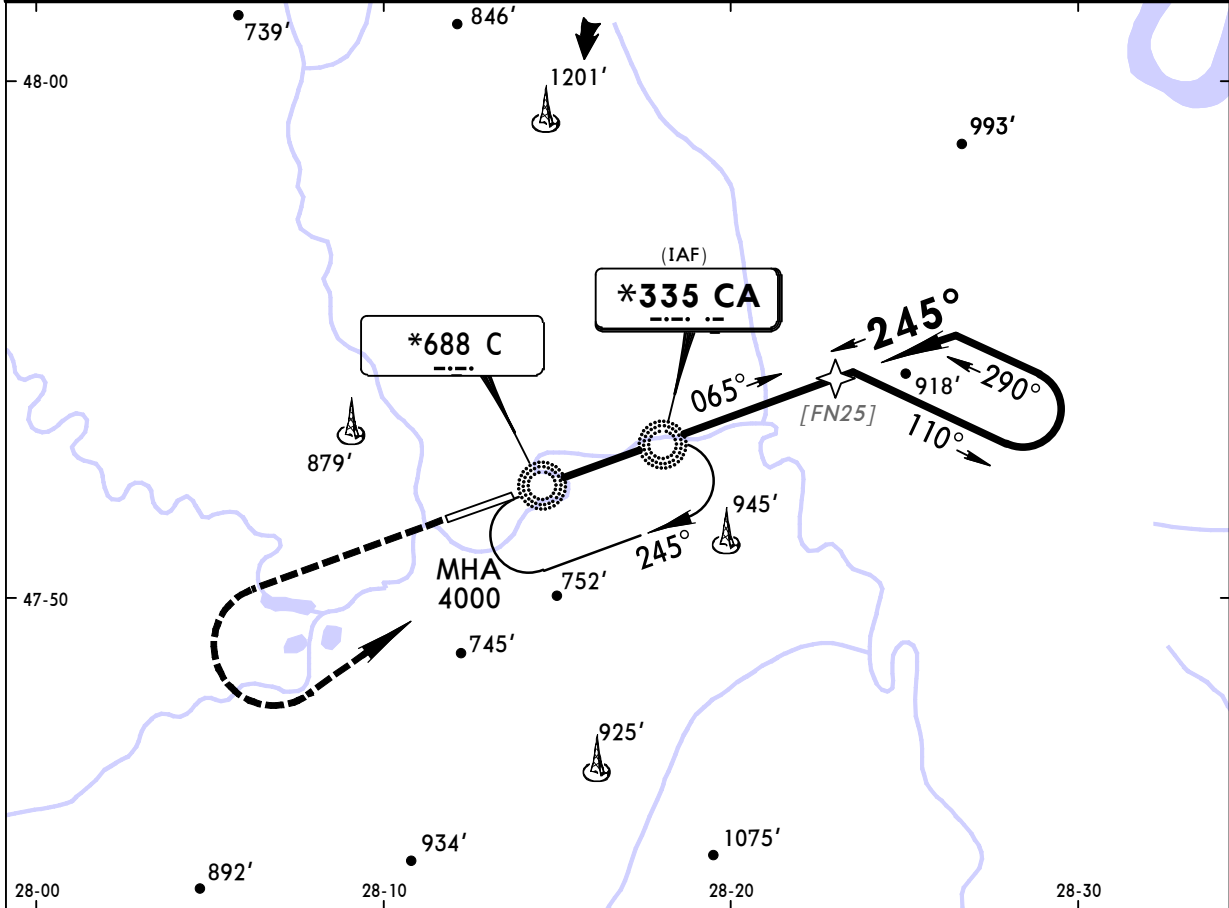
**LUBM**  
**MARCULESTI INTL**

**JEPPESEN** 15 AUG 14 **(16-1)** **Eff 21 Aug**

**MARCULESTI, MOLDOVA**  
**2 NDB Rwy 25**

BRIEFING STRIP™

*MARCULESTI Tower					
122.05					
NDB CA <b>*335</b>	Final Apch Crs <b>245°</b>	Minimum Alt CA NDB <b>1360'</b> (1030')	MDA(H) <b>760'</b> (430')	Apt Elev <b>331'</b> RWY <b>330'</b>	
<b>MISSED APCH: Climb STRAIGHT AHEAD to 2000', then turn LEFT inbound CA NDB climbing to 4000'.</b>					
Alt Set: hPa	Rwy Elev: 12 hPa	Trans level: By ATC	Trans alt: 4000'	MSA CA NDB	



Gnd speed-Kts	70	90	100	120	140	160	2000'	CA <b>335</b>	4000'
Descent angle	3.00°	372	478	531	637	743	↑	← LT	↑
MAP at C NDB									

JAR-OPS		STRAIGHT-IN LANDING RWY 25		CIRCLE-TO-LAND	
	MDA(H) <b>760'</b> (430')	Max Kts	MDA(H)	VIS	
A	RVR 1500m	100	<b>760'</b> (429')	1500m	
B		135	<b>1110'</b> (779')	1600m	
C	RVR 1800m	180	<b>1310'</b> (979')	2400m	
D	RVR 2000m	205	<b>1330'</b> (999')	3600m	