

Page 1

Changed chart(s) since Disc 02-2015

ADD = Added chart, REV = Revised chart, DEL = Deleted chart.

ACT	PROCEDURE IDENT	INDEX	REV DATE	EFF DATE
-----	-----------------	-------	----------	----------

No revision activity since Disc 02-2015

TERMINAL CHART NOTAMS

Chart NOTAMs for Airport LUBL

Type: Terminal

Effectivity: Permanent

Begin Date: 20141113

End Date:

RWY 15/33 stopways withdrawn, apch lights and rwy lights not available.

General Info

Balti, MDA

N 47° 50.3' E 27° 46.8' Mag Var: 4.5°E

Elevation: 760'

Public, IFR, Control Tower, Customs available on a restricted basis,
Landing Fee

Time Zone Info: GMT+2:00 uses DST

Runway Info

Runway 15-33 7349' x 138' concrete

Runway 15 (149.0°M) TDZE 758'

Lights: Edge, ALS, TDZ

Stopway Distance 1312'

Runway 33 (329.0°M) TDZE 706'

Lights: Edge, ALS, TDZ

Stopway Distance 1312'

Communications Info

Balti Tower **122.3**

Notebook Info

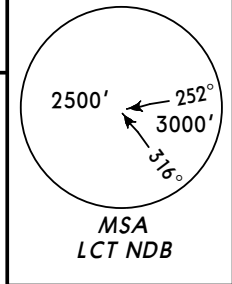
LUBL
BALTI INTL

JEPPESEN
15 AUG 14 **10-2** **Eff 21 Aug**

BALTI, MOLDOVA
RNAV STAR

Apt Elev
760'

Alt Set: hPa Trans level: By ATC Trans alt: 4000'



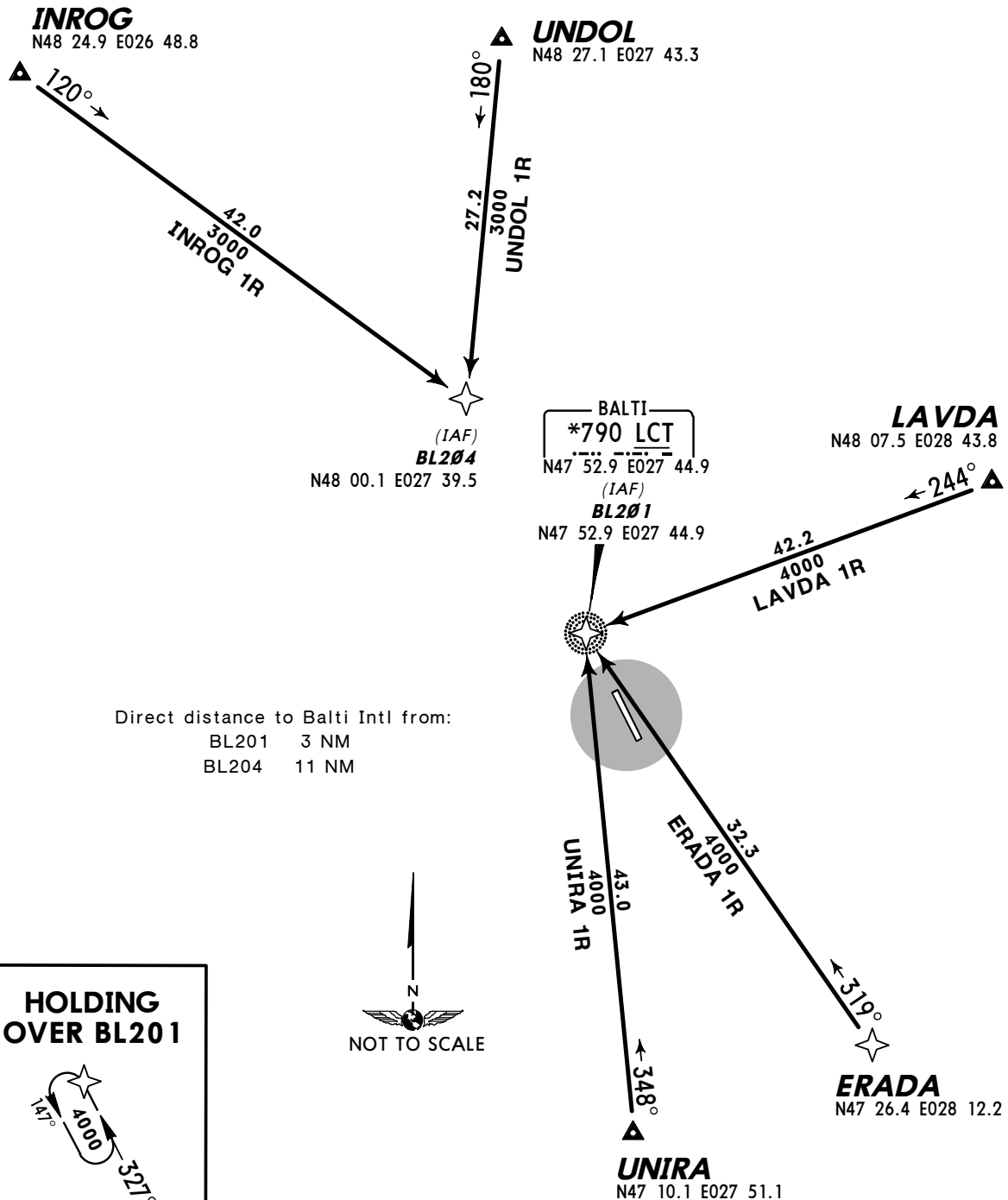
- ERADA ONE ROMEO (ERADA 1R) [ERAD1R]
- INROG ONE ROMEO (INROG 1R) [INRO1R]
- LAVDA ONE ROMEO (LAVDA 1R) [LAVD1R]
- UNDOL ONE ROMEO (UNDOL 1R) [UNDO1R]
- UNIRA ONE ROMEO (UNIRA 1R) [UNIR1R]

RWY 15 RNAV ARRIVALS
RNAV (GNSS)

LOST COMMS ▼ LOST COMMS ▼ LOST COMMS ▼ LOST COMMS LOST COMMS

MAINTAIN last cleared FL/altitude to IAF, then descend in holding to 4000' for instrument approach.

LOST COMMS ▲ LOST COMMS ▲ LOST COMMS ▲ LOST COMMS ▲



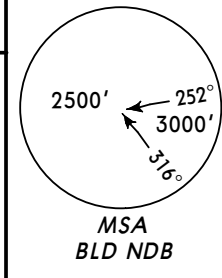
LUBL
BALTI INTL

JEPPESEN
15 AUG 14 (10-2A) Eff 21 Aug

BALTI, MOLDOVA
RNAV STAR

Apt Elev
760'

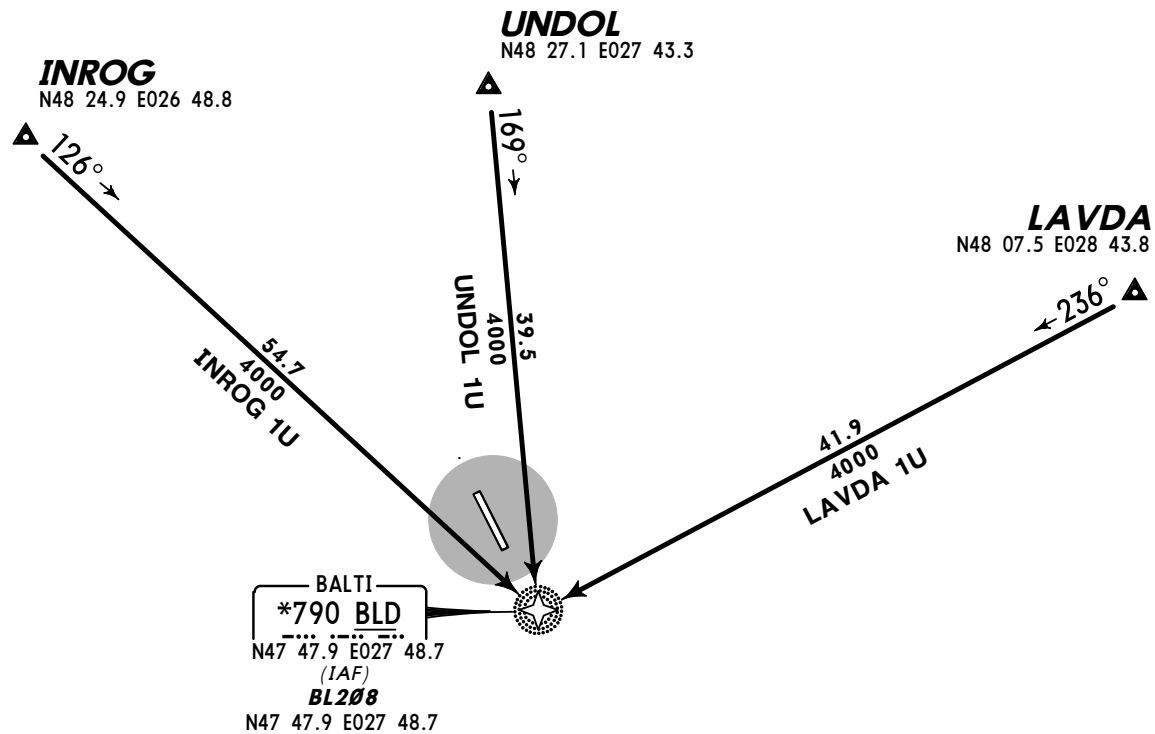
Alt Set: hPa Trans level: By ATC Trans alt: 4000'



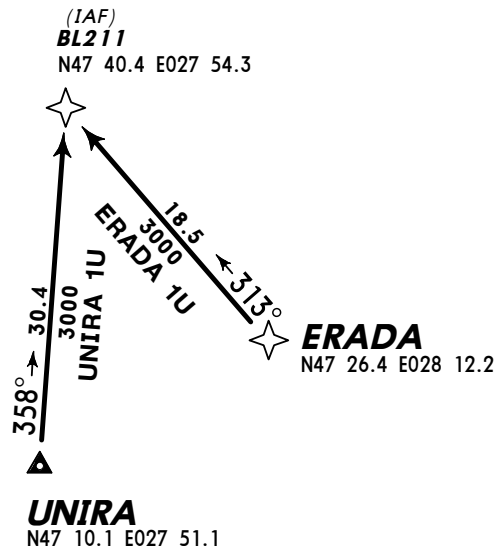
ERADA ONE UNIFORM (ERADA 1U) [ERAD1U]
 INROG ONE UNIFORM (INROG 1U) [INRO1U]
 LAVDA ONE UNIFORM (LAVDA 1U) [LAVD1U]
 UNDOLO ONE UNIFORM (UNDOLO 1U) [UNDO1U]
 UNIRA ONE UNIFORM (UNIRA 1U) [UNIR1U]

RWY 33 RNAV ARRIVALS
 RNAV (GNSS)

LOST COMMS ▼ LOST COMMS ▼ LOST COMMS ▼ LOST COMMS
 MAINTAIN last cleared FL/altitude
 to IAF, then descend in holding to
 4000' for instrument approach.
 LOST COMMS ▲ LOST COMMS ▲ LOST COMMS ▲ LOST COMMS ▲



Direct distance to Balti Intl from:
 BL208 3 NM
 BL211 11 NM



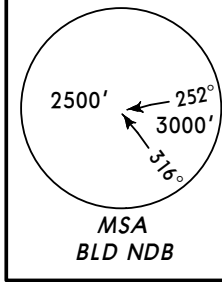
LUBL
BALTI INTL

JEPPESEN
15 AUG 14 **10-3** **Eff 21 Aug**

BALTI, MOLDOVA
RNAV SID

*BALTI Tower 122.30	Apt Elev 760'	Trans level: By ATC Trans alt: 4000' 1. Contact BALTI Tower after take-off. 2. Turns are calculated with 240 KT and bank angle 20°.
-------------------------------	-------------------------	---

ATREK ONE LIMA (ATREK 1L) [ATRE1L]
 ERADA ONE LIMA (ERADA 1L) [ERAD1L]
 INROG ONE LIMA (INROG 1L) [INRO1L]
 UNDOLO ONE LIMA (UNDOLO 1L) [UNDO1L]
 UNIRA ONE LIMA (UNIRA 1L) [UNIR1L]



RWY 33 RNAV DEPARTURES
RNAV (GNSS)

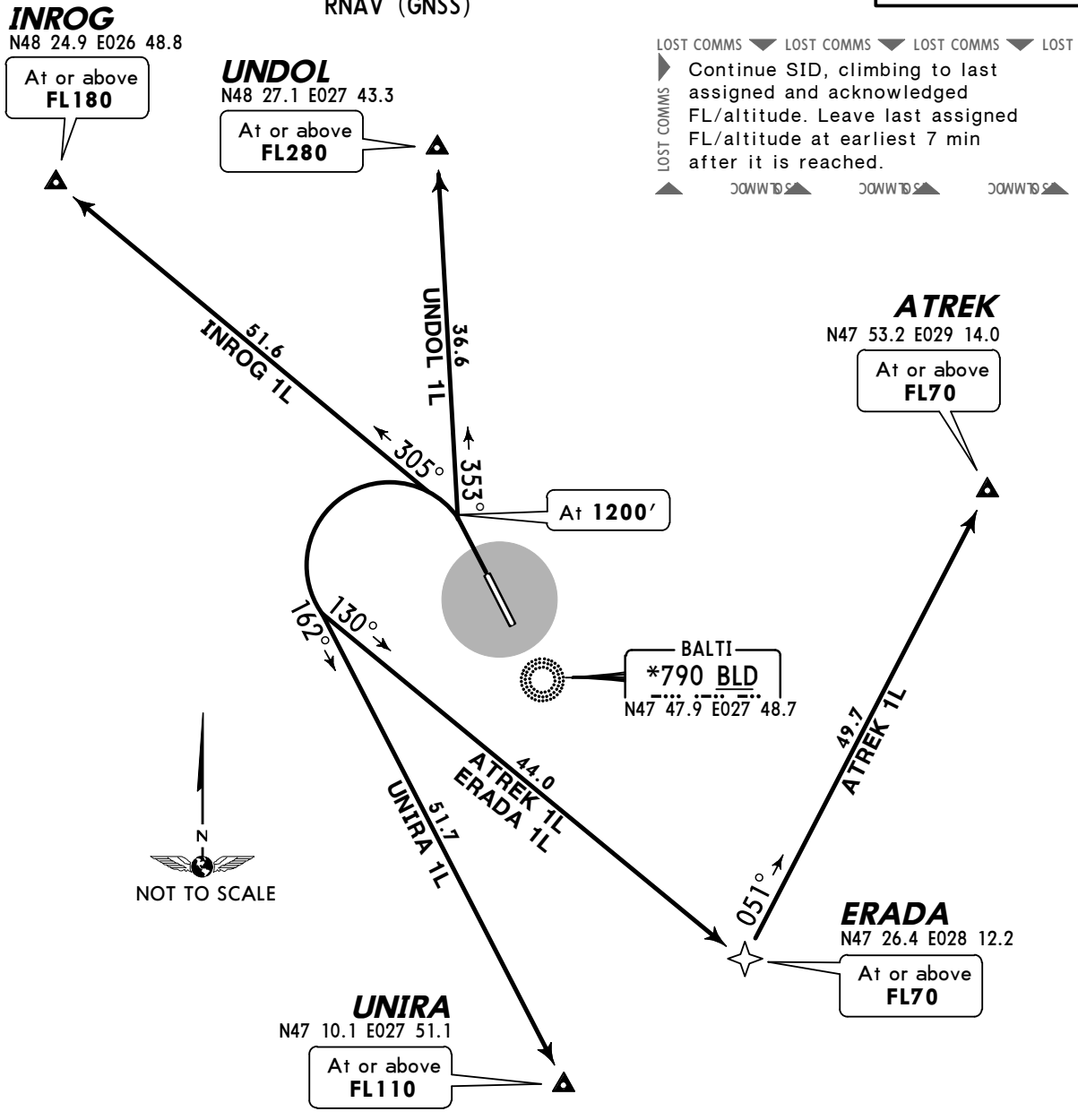
INROG
N48 24.9 E026 48.8

At or above
FL180

UNDOLO
N48 27.1 E027 43.3

At or above
FL280

LOST COMMS ▼ LOST COMMS ▼ LOST COMMS ▼ LOST
 ▶ Continue SID, climbing to last assigned and acknowledged FL/altitude. Leave last assigned FL/altitude at earliest 7 min after it is reached.
 LOST COMMS ▲ DOWN ▲ DOWN ▲ DOWN ▲



Initial climb clearance **ATREK 1L, ERADA 1L: FL70**
INROG 1L: FL180
UNDOLO 1L: FL280
UNIRA 1L: FL110

SID	ROUTING
ATREK 1L	Climb straight ahead to 1200', turn LEFT, 130° track to ERADA, turn LEFT, 051° track to ATREK.
ERADA 1L	Climb straight ahead to 1200', turn LEFT, 130° track to ERADA.
INROG 1L	Climb straight ahead to 1200', turn LEFT, 305° track to INROG.
UNDOLO 1L	Climb straight ahead to 1200', turn RIGHT, 353° track to INROG.
UNIRA 1L	Climb straight ahead to 1200', turn LEFT, 162° track to UNIRA.

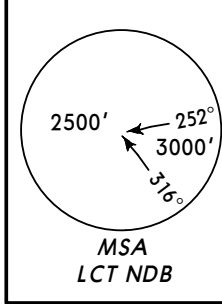
LUBL
BALTI INTL

JEPPESEN
15 AUG 14 **(10-3A)** **Eff 21 Aug**

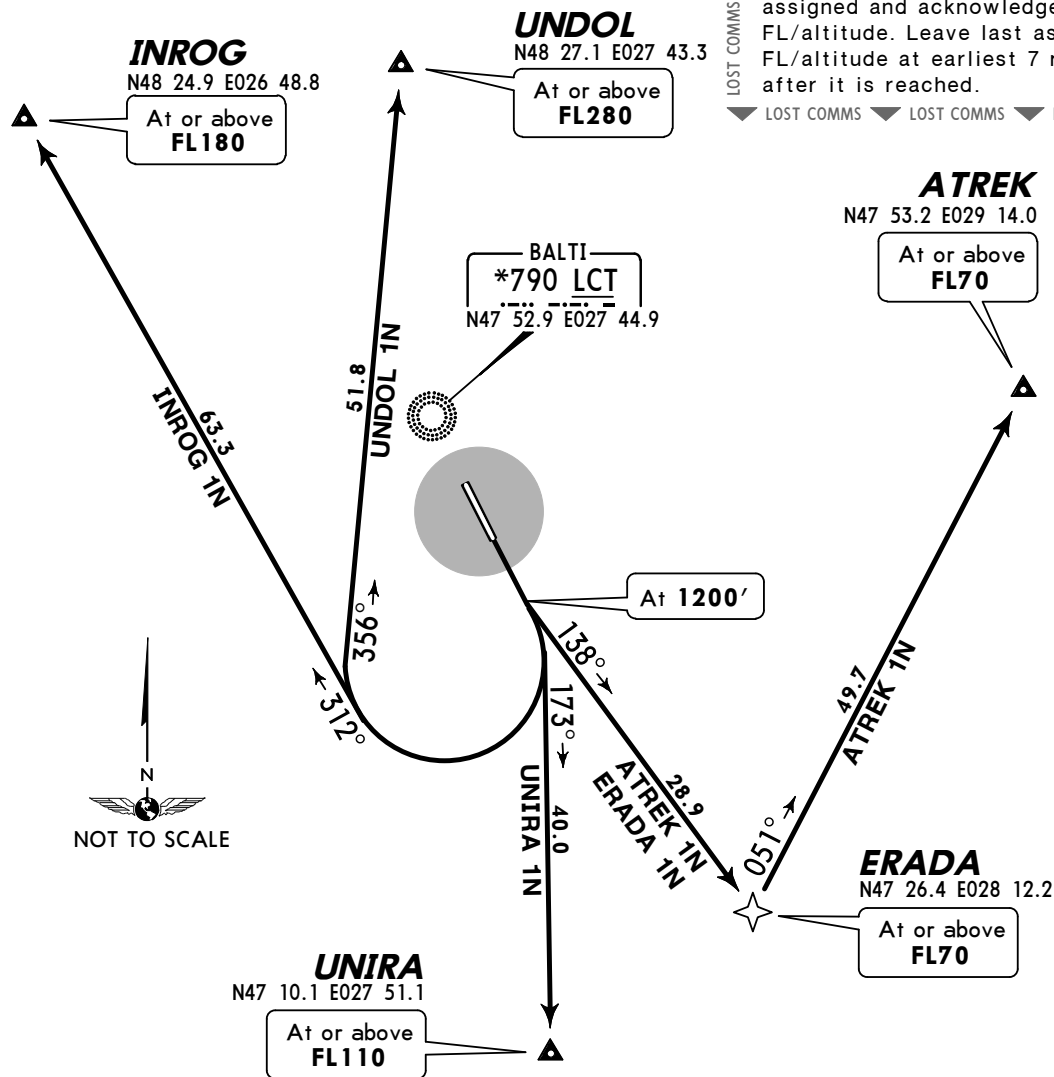
BALTI, MOLDOVA
RNAV SID

*BALTI Tower 122.30	Apt Elev 760'	Trans level: By ATC Trans alt: 4000' 1. Contact BALTI Tower after take-off. 2. Turns are calculated with 240 KT and bank angle 20°.
-------------------------------	-------------------------	---

ATREK ONE NOVEMBER (ATREK 1N) [ATRE1N]
ERADA ONE NOVEMBER (ERADA 1N) [ERAD1N]
INROG ONE NOVEMBER (INROG 1N) [INRO1N]
UNDOL ONE NOVEMBER (UNDOL 1N) [UNDO1N]
UNIRA ONE NOVEMBER (UNIRA 1N) [UNIR1N]
RWY 15 RNAV DEPARTURES
RNAV (GNSS)



LOST COMMS ▼ LOST COMMS ▼ LOST COMMS ▼ LOST
 ▶ Continue SID, climbing to last assigned and acknowledged FL/altitude. Leave last assigned FL/altitude at earliest 7 min after it is reached.
 ▼ LOST COMMS ▼ LOST COMMS ▼ LOST COMMS ▼



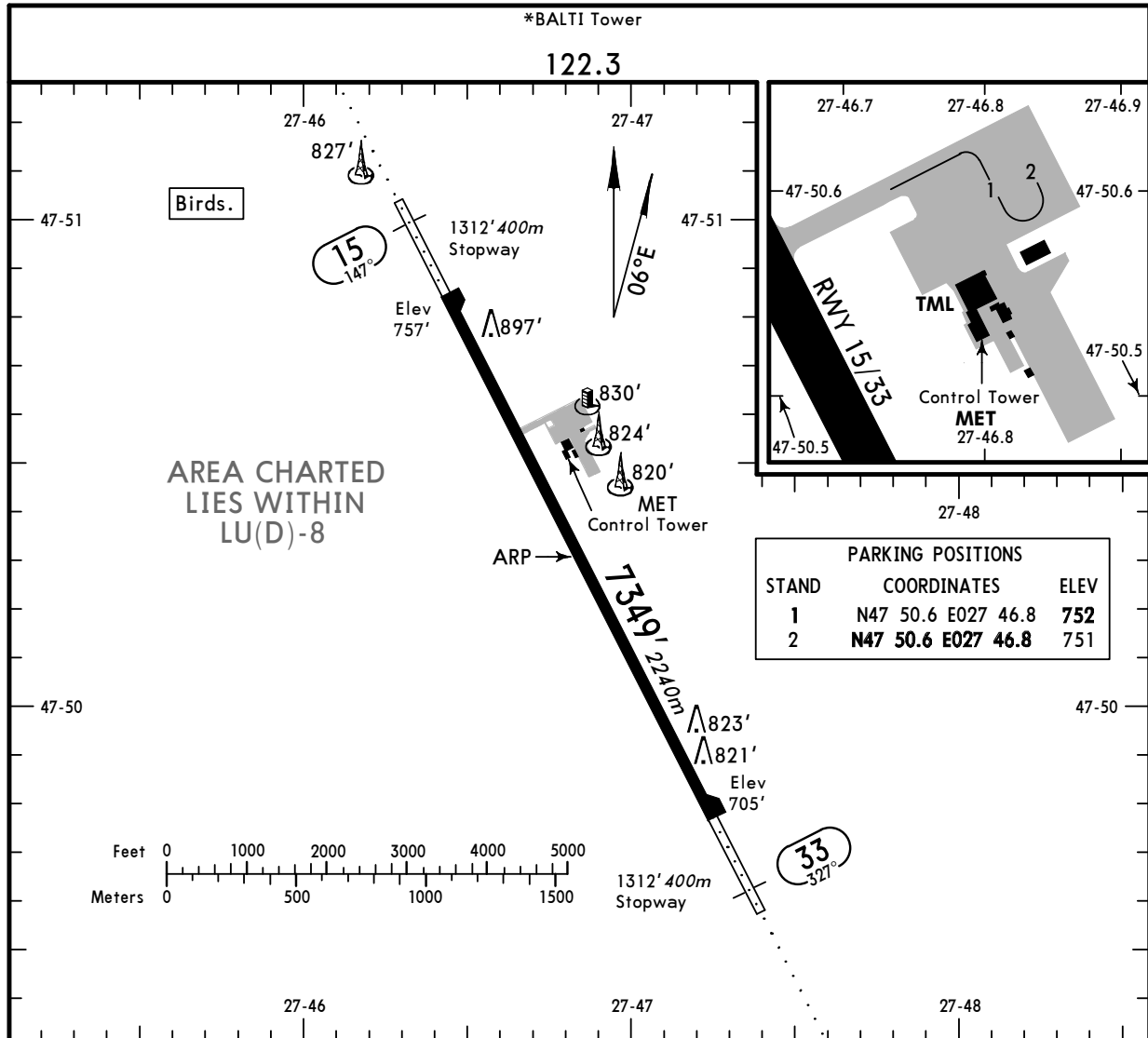
Initial climb clearance **ATREK 1N, ERADA 1N: FL70**
INROG 1N: FL180
UNDOL 1N: FL280
UNIRA 1N: FL110

SID	ROUTING
ATREK 1N	Climb straight ahead to 1200', turn LEFT, 138° track to ERADA, turn LEFT, 051° track to ATREK.
ERADA 1N	Climb straight ahead to 1200', turn LEFT, 138° track to ERADA.
INROG 1N	Climb straight ahead to 1200', turn RIGHT, 312° track to INROG.
UNDOL 1N	Climb straight ahead to 1200', turn RIGHT, 356° track to INROG.
UNIRA 1N	Climb straight ahead to 1200', turn RIGHT, 173° track to UNIRA.

LUBL/BZY
Apt Elev **760'**
N47 50.3 E027 46.8

JEPPESEN
27 SEP 13 **(10-9)**

BALTI, MOLDOVA
BALTI INTL



ADDITIONAL RUNWAY INFORMATION

RWY	USABLE LENGTHS	LANDING BEYOND		TAKE-OFF	WIDTH
		Threshold	Glide Slope		
15 33	HIRL (60m) ALS TDZ		6498' 1981m		138' 42m

JAR-OPS

TAKE-OFF 1

	All Rwys		
	LVP must be in force		
	RCLM (DAY only) or RL	RCLM (DAY only) or RL	NIL (DAY only)
A			
B	250m	400m	500m
C			
D	300m		

1 Operators applying U.S. Ops Specs: CL required below 300m.

LUBL/BZY

JEPPESEN
 15 AUG 14 **10-9S** **Eff 21 Aug**

Standard
BALTI, MOLDOVA
BALTI INTL

STRAIGHT-IN RWY		A	B	C	D
15	RNAV ①	1060' (303')	1060' (303')	1060' (303')	1060' (303')
		R1200m	R1200m	R1200m	R1200m
	<i>ALS out</i>	R1400m	R1400m	R1400m	R1400m
	NDB ①②	1110' (353')	1110' (353')	1110' (353')	1110' (353')
		R1400m	R1400m	R1400m	R1400m
	<i>ALS out</i>	R1500m	R1500m	R1600m	R1600m
33	NDB ①③	1110' (353')	1110' (353')	1110' (353')	1110' (353')
		R1400m	R1400m	R1400m	R1400m
	<i>ALS out</i>	R1600m	R1600m	R1600m	R1600m
	ILS	905' (200')	905' (200')	911' (206')	922' (217')
		R1000m	R1000m	R1000m	R1000m
	<i>ALS out</i>	R1200m	R1200m	R1200m	R1200m
	LOC	NOT AUTH	NOT AUTH	NOT AUTH	NOT AUTH
33	RNAV ①	1010' (305')	1010' (305')	1010' (305')	1010' (305')
		R1200m	R1200m	R1200m	R1200m
	<i>ALS out</i>	R1400m	R1400m	R1400m	R1400m
	NDB ①	1060' (355')	1060' (355')	1060' (355')	1060' (355')
		R1400m	R1400m	R1400m	R1400m
	<i>ALS out</i>	R1600m	R1600m	R1600m	R1600m

- ① Continuous Descent Final Approach.
- ② with FMS.
- ③ w/o FMS.

CIRCLE-TO-LAND	100 KT	135 KT	180 KT	205 KT
	1160' (400')	1260' (500')	1480' (720')	1480' (720')
After RNAV 33 ④	1105' (400')	1205' (500')	1480' (775')	1480' (775')
	V1500m ⑤	V1600m	V2400m	V3600m

- ④ Circling height based on rwy 33 thresh elev of 705'.
- ⑤ or higher minimums of preceding straight-in approach.

TAKE-OFF RWY 15, 33

LVP must be in Force			
	RCLM (DAY only) or RL	RCLM (DAY only) or RL	NIL (DAY only)
A	250m	400m	500m
B			
C			
D	300m		

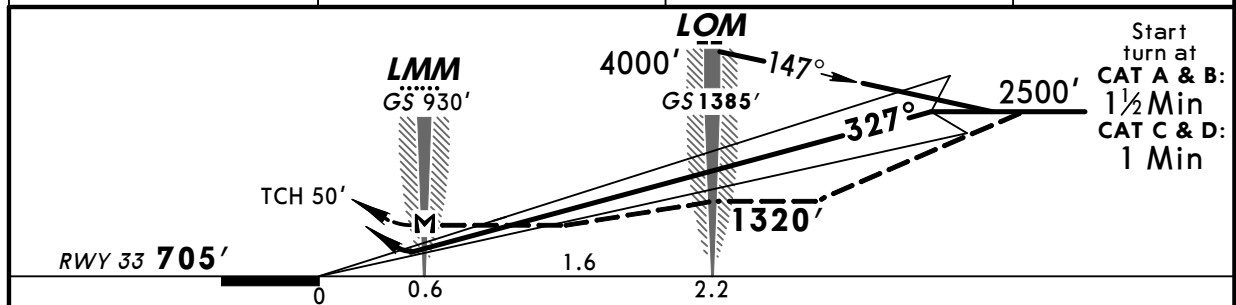
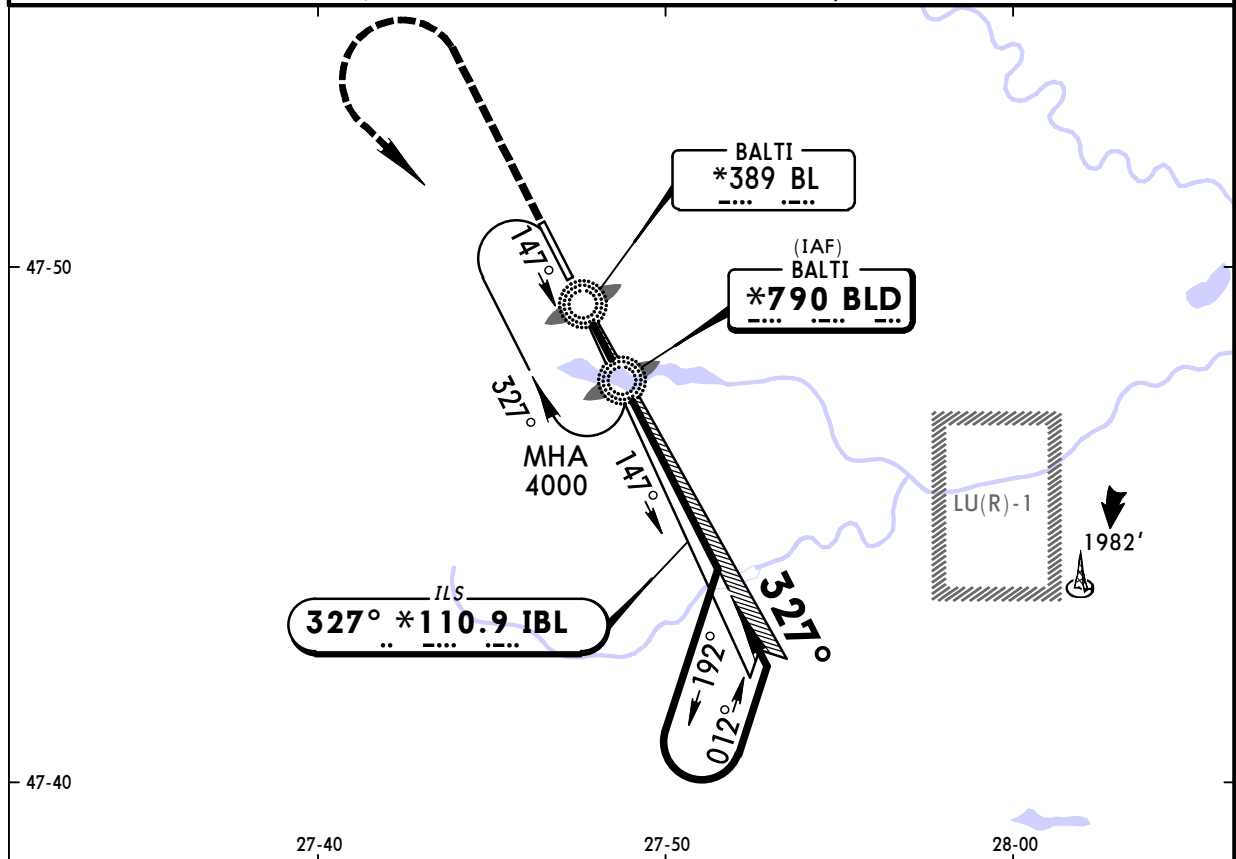
LUBL/BZY
BALTI INTL

JEPPESEN
15 AUG 14 **(11-1)** Eff 21 Aug

BALTI, MOLDOVA
ILS or NDB Rwy 33

BRIEFING STRIP™

*BALTI Tower						
122.3						
LOC IBL *110.9	Final Apch Crs 327°	GS LOM 1385' (680')	ILS DA(H) Refer to Minimums	Apt Elev 760' RWY 705'		
NDB BLD *790		Minimum Alt LOM 1320' (615')	NDB MDA(H) 1020' (315')			
MISSED APCH: Climb STRAIGHT AHEAD to 2500', then turn LEFT to BLD NDB climbing to 4000'.						MSA BLD NDB
Alt Set: hPa		Rwy Elev: 26 hPa		Trans level: By ATC		Trans alt: 4000'



Gnd speed-Kts	70	90	100	120	140	160	ALS 2500'
ILS GS 2.70°	334	430	478	573	669	764	
NDB Descent angle 2.41°	298	384	426	511	597	682	
MAP at LMM							

JAR-OPS STRAIGHT-IN LANDING RWY 33				CIRCLE-TO-LAND				
DA(H) ILS C: 911' (206') AB: 905' (200') D: 922' (217')		LOC (GS out)	NDB MDA(H) 1020' (315')		Max Kts	MDA(H) VIS		
FULL	ALS out		ALS out	ALS out				
A		NOT AUTH	RVR 1300m	RVR 1500m	100	1160' (400')	1500m	
B			RVR 1400m	RVR 1500m	135	1260' (500')	1600m	
C	RVR 800m		RVR 1000m	RVR 1600m	RVR 1800m	180	1480' (720')	2400m
D				RVR 1800m	RVR 2000m	205	1480' (720')	3600m

PANS OPS

LUBL/BZY
BALTI INTL

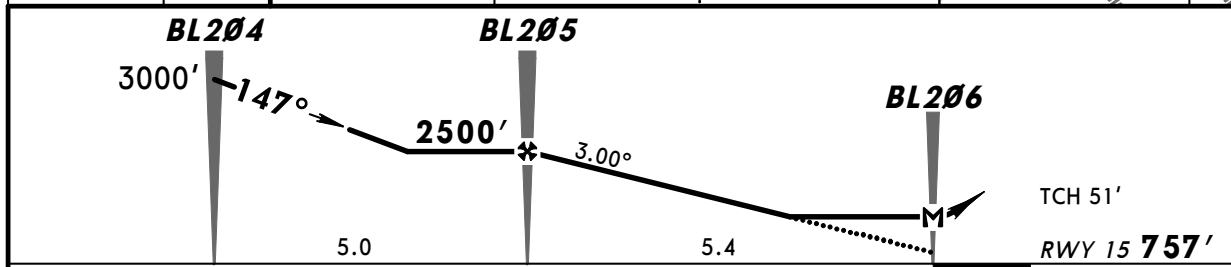
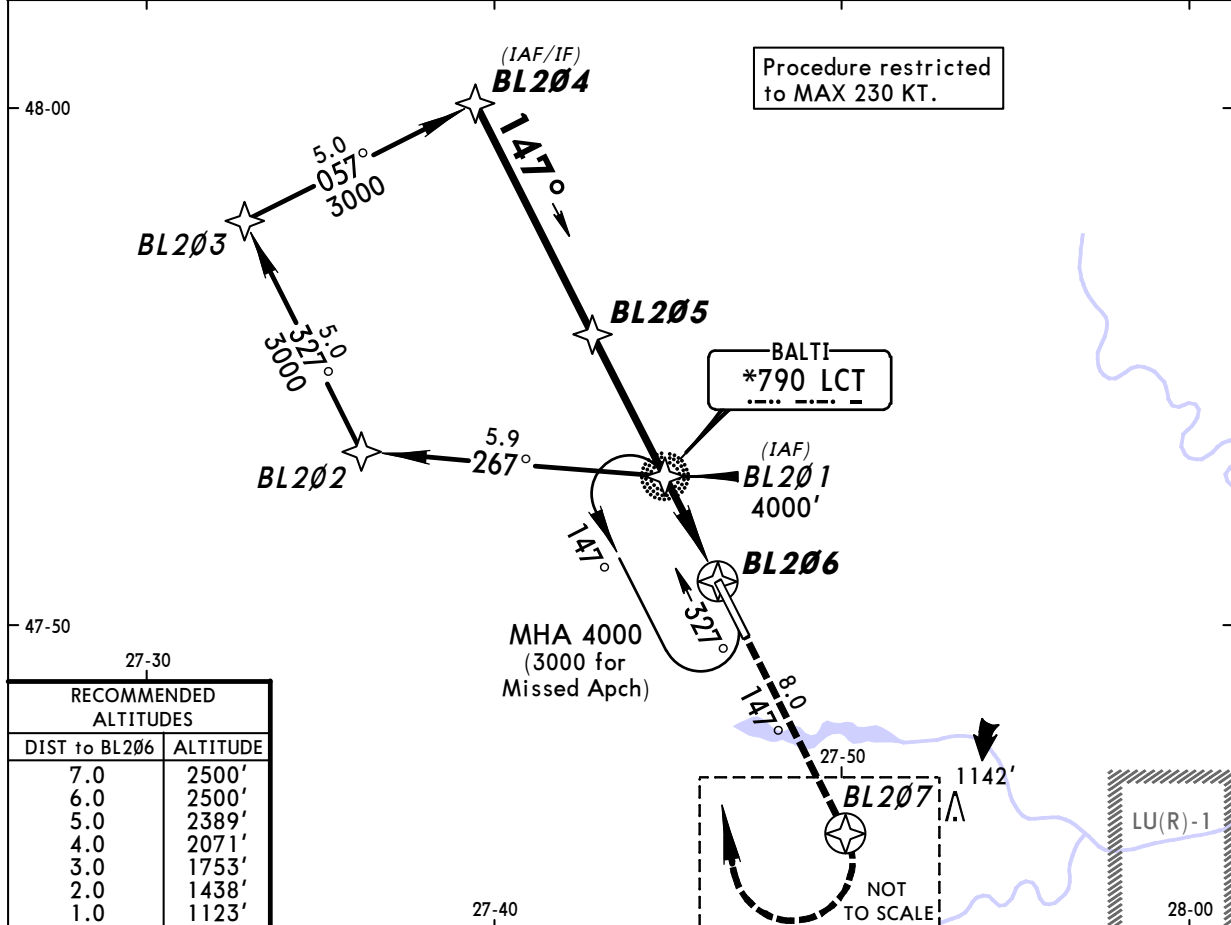
JEPPESEN
15 AUG 14 (12-1) Eff 21 Aug

BALTI, MOLDOVA
RNAV (GPS) Rwy 15

BRIEFING STRIP™

*BALTI Tower
122.3

RNAV	Final Apch Crs 147°	Minimum Alt BL205 2500' (1743')	LNAV MDA(H) 1040' (283')	Apt Elev 760' RWY 757'	<p>MSA LCT NDB</p>
<p>MISSED APCH: Climb STRAIGHT AHEAD to BL207 to 1600', then turn RIGHT to BL201/LCT NDB climbing to 3000'.</p> <p>MISSED APCH WITH LOST COMM: Climb STRAIGHT AHEAD to BL207 to 1600', then turn RIGHT to BL201/LCT NDB climbing to 3000' and complete at least one holding pattern.</p>					
<p>Alt Set: hPa Rwy Elev: 27 hPa Trans level: By ATC Trans alt: 4000'</p>					



<i>Gnd speed-Kts</i>	70	90	100	120	140	160	ALS 1600' BL207
<i>Descent Angle 3.00°</i>	372	478	531	637	743	849	
<i>MAP at BL206</i>							

PANS OPS

JAR-OPS STRAIGHT-IN LANDING RWY 15			CIRCLE-TO-LAND	
LNAV				
MDA(H) 1040' (283')				
		ALS out	Max Kts	
A	RVR 1200m	RVR 1500m	100	1160' (400') 1500m
B	RVR 1300m		135	1260' (500') 1600m
C	RVR 1400m	RVR 1600m	180	1480' (720') 2400m
D	RVR 1600m	RVR 1800m	205	1480' (720') 3600m

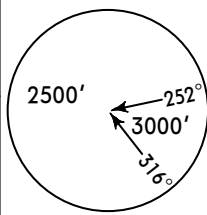
LUBL/BZY
BALTI INTL

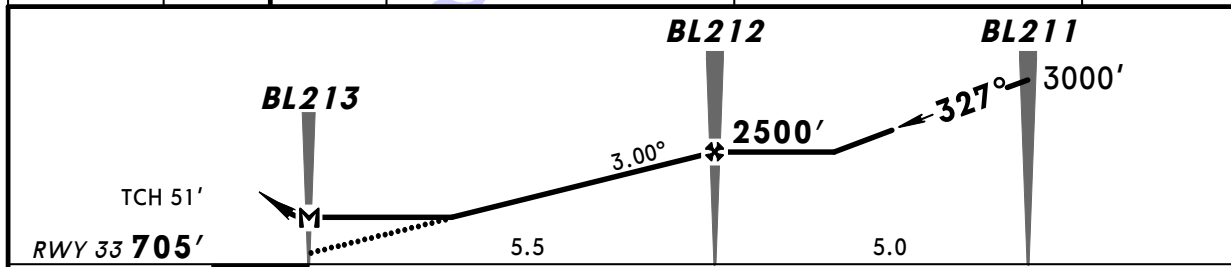
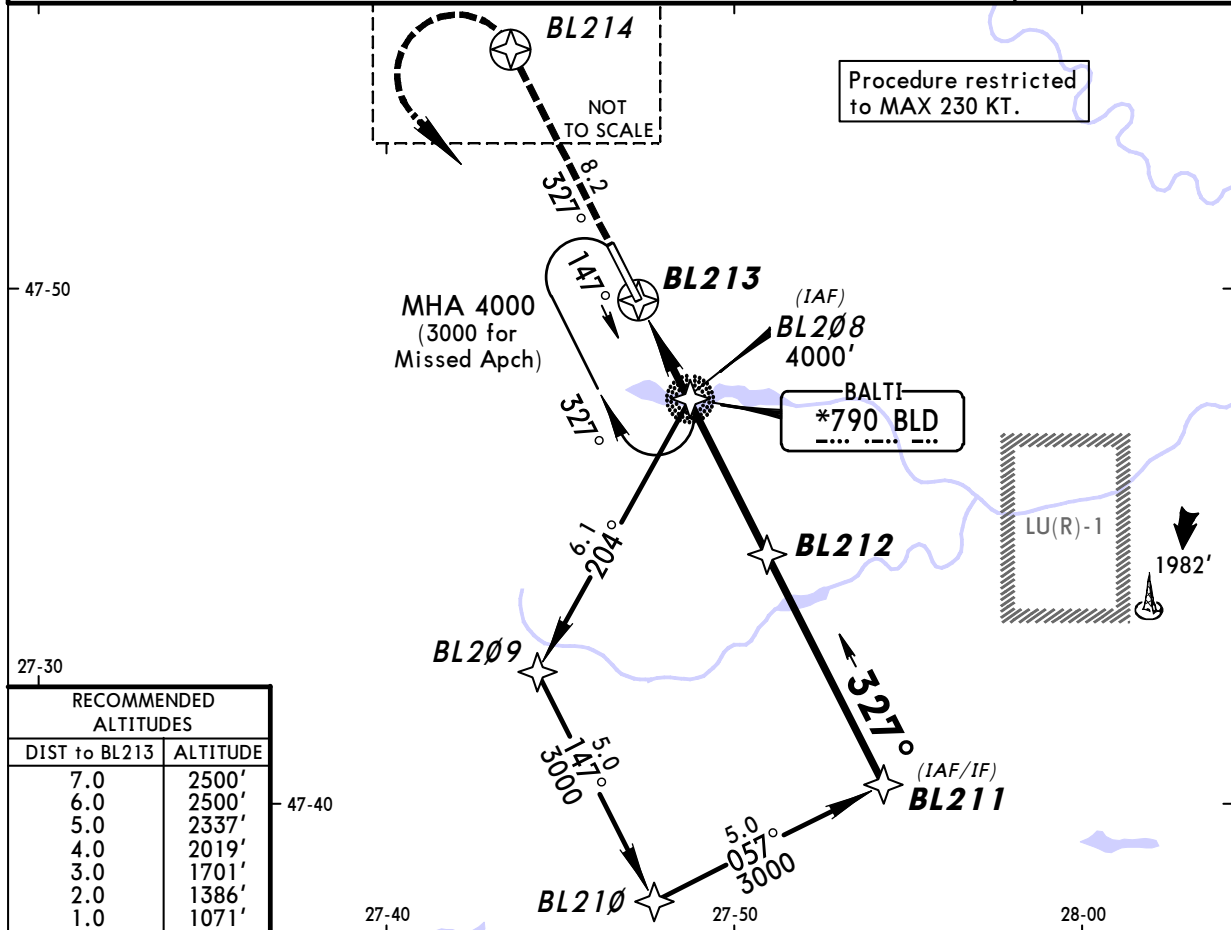
JEPPESEN
15 AUG 14 (12-2) Eff 21 Aug

BALTI, MOLDOVA
RNAV (GPS) Rwy 33

BRIEFING STRIP™

*BALTI Tower
122.3

<i>RNAV</i>	<i>Final Apch Crs</i> 327°	<i>Minimum Alt</i> BL205 2500' (1795')	<i>LNAV MDA(H)</i> 960' (255')	<i>Apt Elev</i> 760' RWY 705'	 <p>MSA BLD NDB</p>
<p>MISSED APCH: Climb STRAIGHT AHEAD to BL214 to 2000', then turn LEFT to BL208/BLD NDB climbing to 3000'.</p> <p>MISSED APCH WITH LOST COMM: Climb STRAIGHT AHEAD to BL214 to 2000', then turn LEFT to BL208/BLD NDB climbing to 3000' and complete at least one holding pattern.</p>					
<p>Alt Set: hPa Rwy Elev: 26 hPa Trans level: By ATC Trans alt: 4000'</p>					



JAR-OPS STRAIGHT-IN LANDING RWY 33						CIRCLE-TO-LAND		
LNAV						Circling height based on rwy 33 thresh elev of 705'		
MDA(H) 960' (255')								
ALS out						Max Kts		
A	RVR 1200m	RVR 1500m				100	1160' (455')	1500m
B	RVR 1300m					135	1260' (555')	1600m
C	RVR 1400m	RVR 1800m				180	1480' (775')	2400m
D	RVR 1600m					205	1480' (775')	3600m

PANS OPS

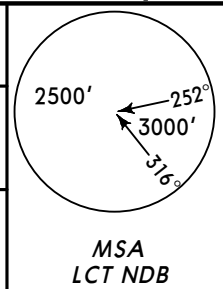
LUBL/BZY
BALTI INTL

JEPPESEN
15 AUG 14 **(16-1)** Eff 21 Aug

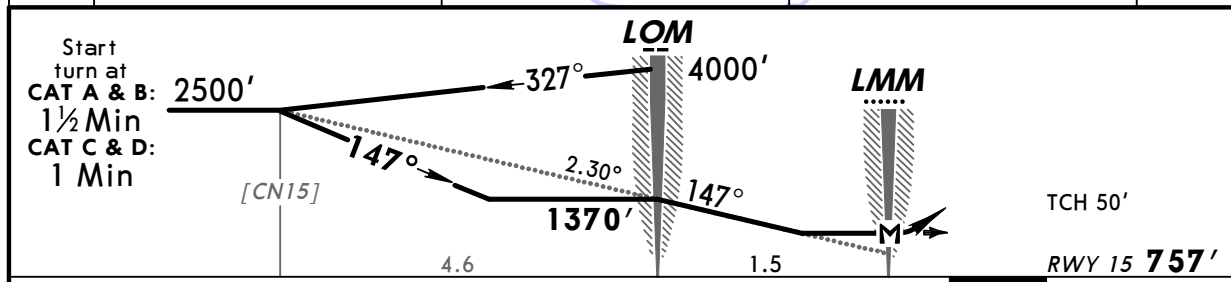
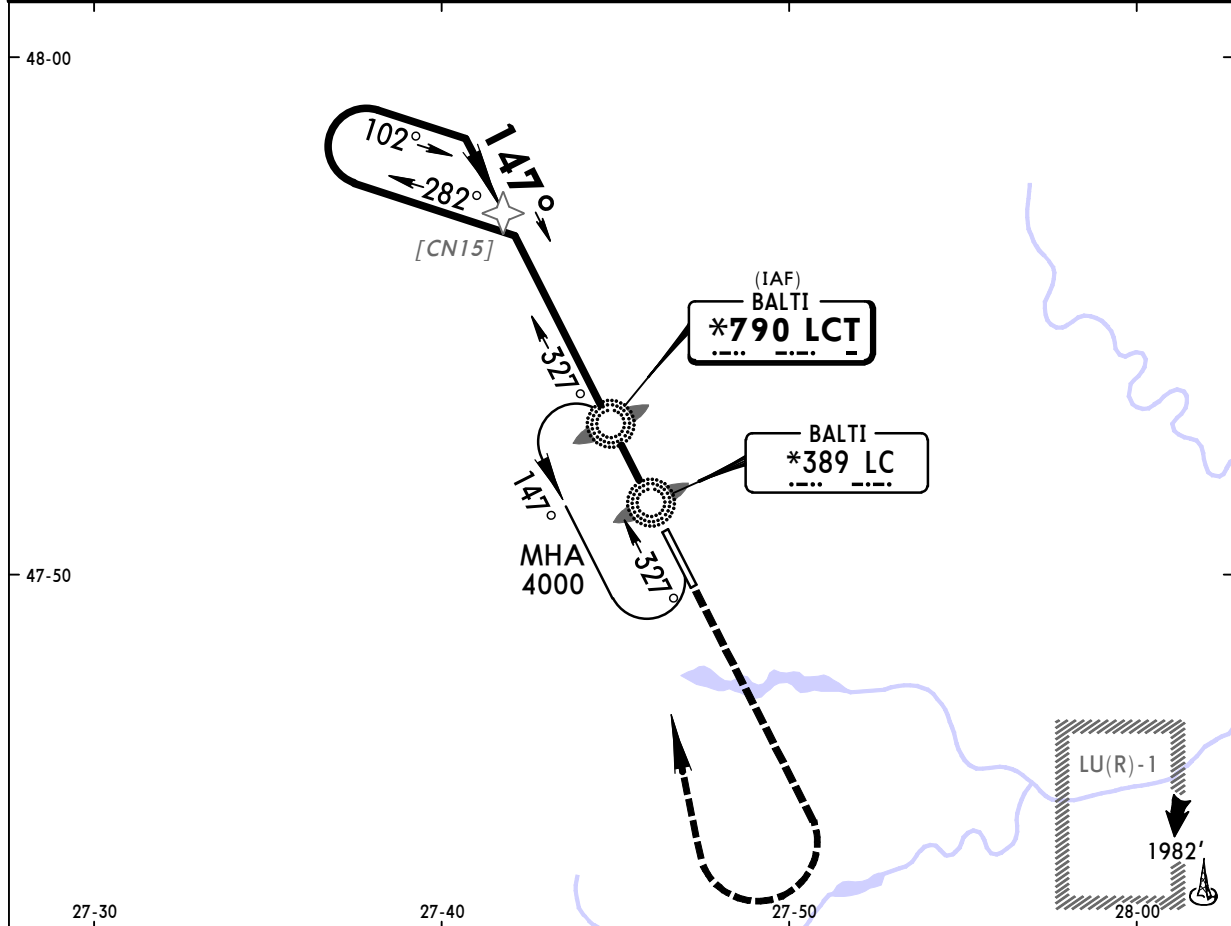
BALTI, MOLDOVA
NDB Rwy 15

BRIEFING STRIP™

*BALTI Tower 122.3				
NDB LCT *790	Final Apch Crs 147°	Minimum Alt LOM 1370' (613')	MDA(H) 1080' (323')	Apt Elev 760' RWY 757'
MISSED APCH: Climb STRAIGHT AHEAD to 2500', then turn RIGHT to LCT NDB climbing to 4000'.				



Alt Set: hPa Rwy Elev: 27 hPa Trans level: By ATC Trans alt: 4000'



Gnd speed-Kts	70	90	100	120	140	160	ALS ↑ 2500'
Descent Angle 2.30°	285	366	407	488	569	651	
MAP at LMM							

JAR-OPS			STRAIGHT-IN LANDING RWY 15		CIRCLE-TO-LAND	
			MDA(H) 1080' (323')			
			ALS out		Max Kts	MDA(H) VIS
A	RVR 1300m		RVR 1500m		100	1160' (400') 1500m
B	RVR 1400m		RVR 1800m		135	1260' (500') 1600m
C	RVR 1600m		RVR 2000m		180	1480' (720') 2400m
D	RVR 1800m				205	1480' (720') 3600m

PANS OPS